



IPSWICH
HIGH
SCHOOL
WOOLVERSTONE HALL
ESTD 1878

The SNAPSHOT

The Ipswich High School Newsletter | Friday 7th June 2024

D-DAY 80: WOOLVERSTONE HALL PAYS TRIBUTE

Ipswich High School opened the doors of Woolverstone Hall to members of the public who wished to pay tribute to the many thousands of forces personnel who sacrificed so much to help secure the freedoms we all benefit from today.

Attendees arrived from 8.30pm and made their way through to the River Lawn at the back of Woolverstone Hall. There was a number of short readings followed by the lighting of a beacon at 9.15 pm, the same time that thousands of beacons were lit across the UK.



From The Head



It was a joy as always to welcome our pupils back after the half term break. This will be a busy half term, in fact the busiest of the year! We have Little Mermaid Jr production to look forward to, a huge range of trips and residentials, sports days and of course the awards events for the Prep and Senior School (Speech Day), Sports Awards, Dance Show, the list goes on! Our outgoing Heads of School launched the process to select the new Y13 Heads of School and Prefects before half term and the Heads of School in the Prep School did the same this week. Once we have selected the Heads of Prep School over the next couple of weeks, I will be able to announce the full Head's Leadership

Team 2024/25. I am as always, impressed by the dedication and passion of all the pupils who put themselves forward for such important roles.

I spoke in Senior School assembly this week about the 80th anniversary of D-Day on 6th June. Remembrance of such an undertaking is important as it marked the beginning of the end of the Second World War. Naval personnel based at Woolverstone Hall played a key role in preparing for the success of Operation Overlord, the invasion of mainland Europe, started by D-Day on 6th June 1944. A beacon was lit on the River Lawn on Thursday evening and an exhibition is running this weekend in the village Hall in Woolverstone.

Prep School News

From Head of Prep School



This week, our Year 6 Business Enterprise projects were presented to Roz from Lucy Lockets. Roz was hugely impressed by all the teams, and we were immensely proud of the way in which the children presented their business ideas and outlined the various products created.

Well done to the winning team 'CLIF Creations' who particularly stood out and were presented with special certificates from Roz. All the teams are now looking forward to sharing their Business Enterprise project with parents during Friday's 'Window to Learning' session.

Next week, we also look forward to welcoming Year 5 pupils from local primary schools for a special Business Enterprise day at IHS.

Carriage Driving & Netball Success

Congratulations to Becca who she competed in the British Driving Society Area 24 Show which covers Suffolk, Cambridgeshire and Huntingdon She won with BDS Area 24 Show, Junior (under 17) championship and also won the adult show class for exercise carriages. She also came runner up in the adult championship for her category .

She has come home with 2 pieces of silverware and 8 Rosettes.

Further success came on the netball court where Becca played in a tournament at St Joes and was nominated by the opposition umpires as the Suffolk Rockets player of the tournament. Well done Becca!



Prep School News

Ipswich High Prep School are proud to present Disney's The Little Mermaid Jr.

Wednesday 26th June 2.30pm – 3.30pm.

Wednesday 26th June 6:30pm – 8pm.

Thursday 27th June 6:30pm – 8pm.

Book your tickets to see this fantastic Prep School production.

Location: Hayworth Theatre, Ipswich High Woolverstone IP9 1AZ.

Booking link here: <https://bit.ly/LittleMermaidJr2024>.



Year 5 Residential

The Year 5 residential to Bradwell was enjoyed by all the pupils. The rain held off for the most part and the children were able to enjoy crabbing, high ropes, archery and dragon boat racing! What a lovely way to end the half-term.



Year 3 trip to Cambridge

Year 3 had a wonderful day in Cambridge visiting the Museum of Classical Archaeology, Cambridge and the Sedgwick Museum of Earth Sciences. They enjoyed investigating different rocks and minerals, learning about Greek myths, and being history detectives for the day!



Senior School News



From Head of Senior School

This week has seen our Senior pupils embarking on some thrilling trips. A group of Year 7 pupils have enjoyed an educational language immersion trip to Normandy, Year 9 have seen the sights of Paris and Disneyland and 40 Year 10 pupils have built endurance and resilience through their practice Silver expedition. These experiences are so important to our pupils, to enable them to develop skills for life beyond Ipswich High School whilst also making memories that will stay with them for years to come.

Ski success for Madeleine

Madeleine raced in two Club Nationals last month and came first in the U16 and was also the fastest overall female! The final race was outstanding and she also recorded the fastest run time of the day, beating all the males! Well done Maddie!.



Fox Academy of Dance Summer Show

This weekend, Anna (Yr8) performed in the Fox Academy of Dance Summer Show.

The Academy's year-end awards were then presented by the school principal.

Anna received one of the five annual awards; hers was for the student showing the most Professionalism.

She was commended for demonstrating maturity throughout her time at the school and professionalism in every aspect of her dance training, lessons and performances.

Well done, Anna!

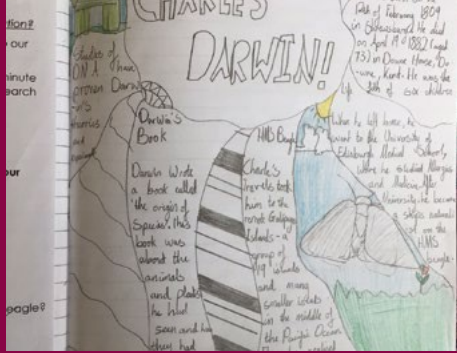


NSEA competition

Representing Ipswich High School at the National Schools Equestrian Association recently were Amelia, Jemma, Charlotte and Olivia. They had all qualified for the championships and showed incredible team spirit. Unfortunately, Jemma couldn't compete at the event due to an injury but still came along to support her team mates. With over 200 competitors in the class Amelia was only 2 seconds off the optimum time! Well done to you all.



Teaching & Learning News



In science, Year 6 have been inspired by all their research work on Charles Darwin and have created some posters.

I

INSPIRED



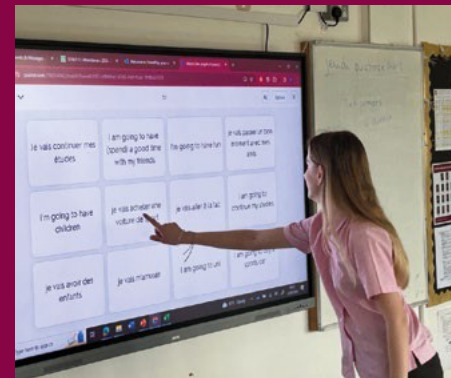
Pupils were inspired by a display of science experiments during their lunchtime.



Year 3 have thoroughly enjoyed their work in their computing lessons on branching databases.

H

HAPPY



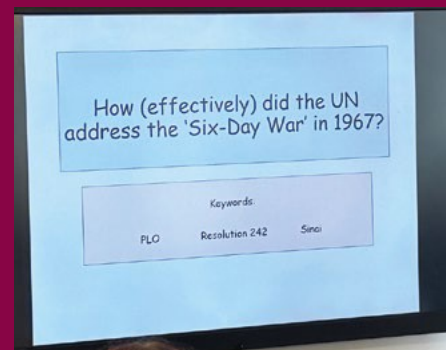
In MFL Year 11 have enjoyed competing against each other in a translation activity on Quizlet.



Year 4 have been challenging themselves in French this week. They are learning the names for food, and how to order items from a menu.

S

SUCCESSFUL



In History, pupil success is supported with a key question and keywords.

School Events



IHSA Fete - Saturday 22nd June 12-3pm

We are looking for stallholders for the IHSA fete.

If you are interested please email

t.ruffell@ipswichhighschool.co.uk



Fête de la Musique - Thursday 20th June 5-7pm

Come along and listen to music performances from our pupils.

Enjoy traditional French fête games and face painting.

Food and drink available.

Visit us 5pm-7pm on Thursday 20th June.

Book your tickets here: <https://bit.ly/fetedelamusique24>



Iconic - Tuesday 2nd July

Ipswich High School is proud to present our Senior School Dance Show: 'Iconic'. This event will be held on Tuesday 2nd July in the Hayworth Theatre. The show is a tribute to the commitment and effort that each group has invested in their curriculum and enrichment activities, and we are excited to share this production with you. The show will start at 18:30 and should end at approximately 20:30

Tickets are available here: <https://bit.ly/3yXvAbk>



History Hit

Written by Naomi Limer

Woolverstone Hall in World War Two

In 1937 the Nuffield Trust, on behalf of Oxford University, acquired the Woolverstone Hall estate for £185,000 as part of the university's increasingly large property portfolio. The estate comprised over 6000 acres of farmland on the Shotley peninsula, including almost six miles of frontage to the River Orwell.

Woolverstone Hall and its grounds then lay empty for the first time in almost two hundred years. With the Berners family who had built and improved the estate over generations and the large staff who maintained it gone, the Hall and its grounds fell into a state of silent disrepair.

With the outbreak of war and as with many buildings of its type and situation in the UK, the Hall and its surrounding parkland were requisitioned by the Admiralty for use as a 'stone frigate' naval training station, being commissioned in 1943.

As HMS Woolverstone, Woolverstone Hall played an



Note the observation deck on top of Woolverstone Hall.



important role in the preparations for the D-Day landings, training soldiers and sailors as part of a combined forces effort, acting as a planning and operational base, and being used for billeting troops and members of the WRNS in the 52 Nissen huts that were placed over the front and back lawns.

A temporary observation block was erected on the roof of the main building, as can be seen in photographs taken at the time and in the

years immediately after the war.

HMS Woolverstone also played a part in Operation Quicksilver during May and June 1944, in which moored dummy landing craft were part of an Allied deception aimed at making an invasion on the shores of Calais, rather than Normandy, look likely.

'Bigbobs' as the dummy flat-bottomed craft were known, were constructed under the veil of darkness and shifted down to the

Continued on next page



History Hit

marina ready to be seen by German reconnaissance aircraft.

In the month prior to the D-Day invasion, over 1000 personnel were placed in 'lockdown' and stationed at the Hall, with many eventually leaving for France from the shores of the Orwell, having either been based at Woolverstone or further upriver.

What happened next is regarded as one of the biggest Allied successes of WW2, with a total of 160,000 Allied troops and 6,000 vehicles crossing the Channel to France– an endeavour of which HMS Woolverstone played a small, but by no means insignificant part.

Some of the 52 Nissen huts outside the main building – these were retained for many years after the war, when the Hall was home to the London Nautical School and the Woolverstone Hall School.

Preparations at Woolverstone marina



Part of the temporary accommodation and facilities created for those stationed at HMS Woolverstone (now the site of the teaching block).



Snapshot

Local Events



To mark the 80th anniversary of D-Day, Woolverstone Parish Council and Friends of Woolverstone are holding an exhibition that explores the part the village of Woolverstone played in events leading up to D-Day and the following months. An array of information boards will tell the story, supported by a treasure trove of spectacular photographs.

You will learn about:

- The embarkation hard construction programme in southern England,
- The Operations base at Woolverstone Hall and the role of HMS Woolverstone,
- The topography of wartime Woolverstone from aerial photographs
- Operation Quicksilver and the secret Bigbobs
- The story of Landing Craft, Tank 7074
- The D-Day timeline - relevant to Woolverstone (April 1st 1944 to August 1st 1944)
- Memories of Dame Marion Kettlewell WRNS
- Memories of Roy Walker RN
- Memories of Sgt Gerry Solomon RAC
- Memories of local residents
- And, ...the Denis Wheatley connection

We hope you will stop by and learn about the story of the village of Woolverstone and its part in Operation Overlord.

Find us at: Berners Hall, Main Road, Woolverstone. IP9 1AR

Free entrance.

10:00 – 4:00 Saturday 8th and Sunday 9th June

Refreshments available



Snapshot

Alumni News



□

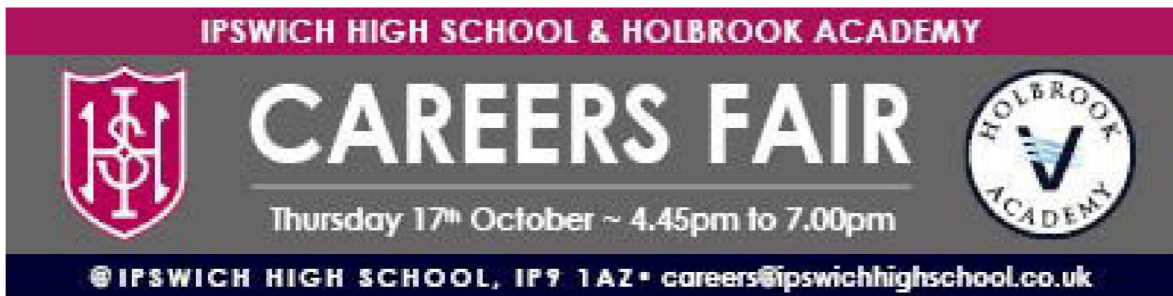
We are excited to announce that Ipswich High School will be hosting a special filming day on the 29th of June to create an alumni video. If you wish to share your IHS alumni story please complete the form via this link. <https://bit.ly/4e2rD5H>



Careers & LRC News

IHS & HA Careers Fair 2024:

Our annual 'IHS & HA Careers Fair' will be held at Ipswich High School on Thursday 17th October, we will once again be collaborating with local school, Holbrook Academy. We look forward to welcoming all Year 9, 10, 11, 12 and 13 students along with their parents and this year we will incorporate our 'University and Apprenticeship Information Event' (previously scheduled in June) into the Careers Fair to make this an even bigger Careers experience for you all.



Y10 Work Experience - Summer 2024:

Parents, please continue to discuss options with your child. See [Firefly](#) for the letter home and full details along with helpful links and information. Deadline for paperwork to be completed by the businesses for each placement was Monday 3rd June which has now passed. Please get in contact if you are having problems finding a placement.

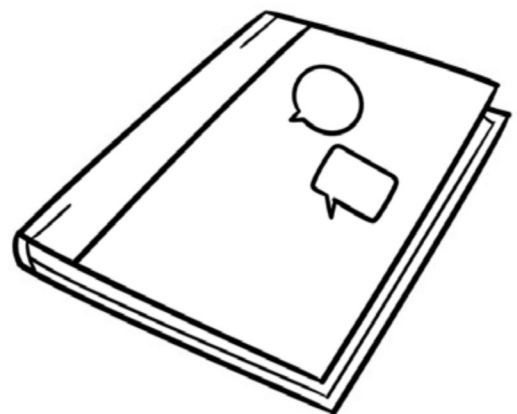


Leavers & Overdue Books from the LRC

All Year 11 and Year 13, please ensure you have returned any Library books to the LRC by 21st June. Please have a good dig around in bags, lockers and under your bed! Outstanding books will be taken off school deposits before they are returned to parents.

Please could all other years also have a good search for overdue books from the LRC by 21st June to avoid any book fines.

We really appreciate your help to keep our LRCs stocked with the books for everyone to enjoy.



Snapshot

Wellbeing News



IPSWICH HIGH SCHOOL
WOOLVERSTONE HALL
SUFFOLK, ENGLAND

Peer Mentor

Are you feeling sad, stressed, worried or under pressure?

Do you have friendship issues, homework problems,
parent or home concerns?

Do you need someone to talk to?

...talk to one of our Peer Mentors!



If you would like a Peer Mentor to meet with you and support you,
complete a request slip and post it in a box
in either the LRC or the Orwell Kitchen.

Alternatively email wellbeing@ipswichhigh.school or
get a referral from a Tutor.

For further details please contact:

Mrs Offord - Safeguarding Manager & Head of Careers
wellbeing@ipswichhigh.school • 01473 780201

Wellbeing News

Parenting Support You Can Trust

Parenting is one of the toughest jobs we ever do but it should also be one of the most fun and rewarding. The Wellbeing Hub staff speak to parents and schools day in and day out, and know the challenges parents face, not least because, as parents themselves, they've been there and got most of the T-shirts.

Of course, the ride will not always be smooth, and with adolescence starting from eight and going on until twenty-five it is a long haul. However, with knowledge and support we can all enjoy the journey as we help our children become happy, healthy, world-ready adults.

All [parents](#) and pupils have FREE unlimited access to The Wellbeing Hub. Pupils are signed up automatically and have been sent an email to complete their registration.

Watch this short introductory film to find out more <https://vimeo.com/740743218/602c406ef5>

Celebrating Differences Pride Awareness Week, 10th to 14th June 2024

To focus on the importance of tolerance and inclusivity and fundamental British values, we will be holding a Pride Awareness week in school during w/c 10th June, pupils and students will be involved in activities throughout the week as outlined in the letters sent home.



"Are exams causing you sleepless nights and frazzled nerves? Fear not! We've got your back. Here are 10 practical tips to help you conquer exam stress. Watch them [HERE](#)."

In Need of Support?

During school hours, please contact our Designated Safeguarding Lead: Ms Extance or, Deputy Designated Safeguarding Leads: Mrs Finch (Prep School), Mrs Offord (Senior School), Mrs Vickers (Sixth Form) - on 01473 780201, Mr Collishaw (Boarding) - on 01473 780201.

Out of School hours support below:

YoungMinds: 24/7 - Text YM to 85258

Samaritans: 24/7 - 116123

Kooth: kooth.com

Sexual assault: NSPCC - 0800 136 663 / help@nspcc.org.uk

Sexual assault local contact: The Ferns - 0300 123 5058

Childline: Call 0800 1111 or 1-2-1 chat online

NHS Mental Health Support: 111, option 2

Online bullying: thinkuknow.co.uk

We have resources to aid parents to support their child's wellbeing, on [our Firefly page](#).

What Parents & Educators Need to Know about PALWORLD

AGE RESTRICTION
PEGI
12

WHAT ARE THE RISKS?

In Palworld, players head out into an environment where they must craft items and survive alongside creatures called 'Pals'. In this sense, it's similar to Minecraft: fight monsters while maintaining a base. Palworld has sold more than six million copies and often has over two million people playing online simultaneously.

MATURE CONTENT

18
CENSORED

While Palworld may look cute and cuddly, the game does have its more mature moments. For example, if you try to catch a Pal and don't succeed, the game displays a mild swear word. There are also minor references to inhumane acts like slavery when getting your Pals to perform certain tasks for you. While the presentation is intended to be humorous, this could still be seen as being in poor taste.

VIOLENCE

Palworld has been referred to as "Pokémon with guns" and with good reason. As the game progresses, Pals can be given firearms, explosives and other weapons, allowing them to fight by the player's side. There are several moments where cute animals use these guns to kill other Pals or fight against bosses. The violence is cartoonish and bloodless, but it's present.

SUGGESTIVE WRITING

Some of the Pals' descriptions – found in the game menu – can be very suggestive and adult in nature. The game makes a joke of balancing on the line between age-appropriate and mature content; playing on the contrast between the two while never being outright explicit. While it's possible that younger players won't notice this content, it's just as conceivable that they will.

ONLINE PLAY

Palworld can be played with other people online. On Xbox, players can only play with people on their friends list. On PC, however, up to 32 players can share in the same game, playing in a large online world, and these players may not necessarily be known to the host beforehand. It can be quite complicated to set up these servers. However, it can be quite complicated to set up these servers (online worlds) and they cost money to keep active.

DIFFICULTY

Despite its endearing visuals, Palworld is actually an extremely difficult game in places: defeating bosses, catching Pals and exploring the environment can all be very tricky. It takes a lot of skill – or working together with a friend – to be successful, which could be off-putting or even aggravating to a player expecting something more like Minecraft or Pokémon.

Advice for Parents & Educators

WATCH GAMEPLAY

Watching gameplay and reviews for Palworld on sites like YouTube is the best available means of gathering information on it, second only to playing it for yourself. Currently, there are plenty of videos showing this game off to the internet at large, along with detailed breakdowns of what can be found or done within it.

LEND A HAND

By learning the basics of the game – Pal catching, battling, crafting items and building up a base – you can help to lower the difficulty for younger players. This, in turn, decreases the likelihood that such players will need to look online for tips and tricks, where they could quite easily stumble across more violent and mature content associated with the game.

SET CONTENT LIMITS

As Palworld is available on Xbox Game Pass, it's easy for players to access it. Any player subscribed to this service can simply find the title on Game Pass and hit the download button. If a child or young person isn't allowed to play Palworld, the best way to prevent them downloading it regardless is to enable age limits on their account. Setting the limit below 12 will not allow users to install Palworld.

PLAY TOGETHER

By playing Palworld yourself, you'll have the best chance of catching any content that you don't think is suitable for children, as well as getting an idea of how violence is presented in the game. The conflict is cartoonish in nature – until players and Pals unlock the ability to use guns, at which point it can become more intense. It's likely best for you to give it a look and form your own opinion.

PLACE BOUNDARIES

Limit options when it comes to online play. For players on PC, they'll still be able to cooperate with friends through the game's multiplayer option, much like Xbox users. Just because they have the option to run a dedicated server that's open to anyone doesn't mean they need to take it. The risks of interacting with strangers can be significantly lowered or even eliminated entirely by playing on servers which are restricted to friends only.

Meet Our Expert

Editor in Chief of gaming and esports site GGRecon, Lloyd Coombes has worked in the games media industry for five years. He's played every Tekken title since the series began and, as a parent, also values the importance of online safety. Writing mainly about tech and fitness, his articles have been published on influential sites including IGN and TechRadar.



#WakeUpWednesday

The National College



IPSWICH HIGH PREP SCHOOL
PROUDLY PRESENTS

Disney

THE LITTLE
MERMAID



26TH JUNE 2024 2:30PM

26TH JUNE 2024 6:30PM

27TH JUNE 2024 6.30PM

ADULTS £10
CHILDREN £5

The Hayworth Theatre
Woolverstone
IP9 1AZ

[CLICK HERE TO BOOK YOUR TICKETS](#)

Music by
Alan Menken

Lyrics by
Howard Ashman and Glenn Slater

Book by
Doug Wright

Based on the Hans Christian Andersen story and the Disney film
This amateur production is presented by arrangement with
Music Theatre International. All authorised performance materials are also supplied by MTI
www.mfishows.co.uk